

MO-114D / MO-104D

JUKI®

The overlock sewing machines that create beautiful finished seams.

With a wide variety of stitch patterns, you can sew both stretchy and knit fabrics with ease.

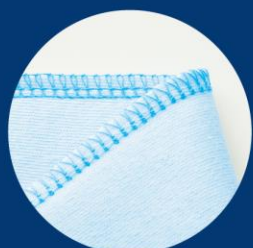


MO-114D



MO-104D

* 2-Thread overcasting is optional.



4-Thread Overlock



3-Thread Rolled Hem



3-Thread Narrow Overlock

* 2-Needle, 2/3/4 Thread Overlock with Automatic Rolled Hemming and Differential Feed

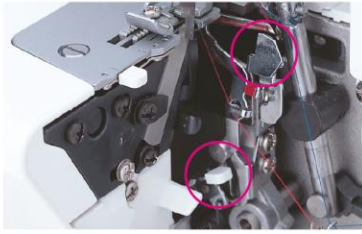
Lay-in Type Thread Tension Slots

throughout the machine make threading easy and efficient. No wrapping, just follow the color coded thread path.



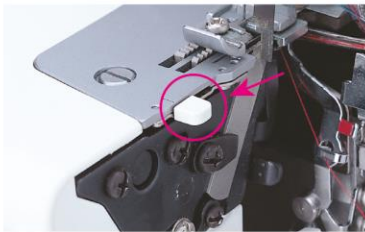
Lower Looper Threader

allows for easy threading in seconds. Just slide the thread into the slot and snap the looper into place. (MO-114D only)



Automatic Rolled Hemming

can be created quickly and easily with built-in fingertip control. There is no need to change the throat plate or foot.



Cutting Width

can be adjusted quickly for perfect seams and rolled edges.



Adjustable Stitch Length

by simply turning dial located on the exterior right hand side within the range of 1 to 4mm. (MO-114D). For MO-104D, the knob is located inside the machine.



Differential Feed

is easily controlled and adjusted by a dial located on the exterior right hand side. (MO-114D). For MO-104D, the dial is located on the exterior left hand side.



MO-114D

MO-104D

Standard Specifications

MO-114D / MO-104D	
Number of Threads	2 / 3 / 4 Threads
Needle	Schmetz 130 / 705H Nm 70, 80, 90
Standard Overlock Width	Left Needle: 5-7mm
	Right Needle: 3-5mm
	Rolled Hem: 1.8-2.2mm
Stitch Length	1-4mm (Standard: 2.5mm)
Differential Feed	0.7-2.0 Ratio
Presser Foot Lift	5mm / 7.5mm
Sewing Speed	Maximum 1,500spm

Other Features

- Adjustable presser foot pressure
- Sewing light
- Upper looper converter (option for MO-104D)

Optional Attachments



Blind Stitch Presser Foot



Universal Blind Stitch Presser Foot



Elasticator Presser Foot



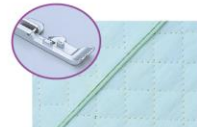
Cording Presser Foot



Beading Presser Foot



Curved Beading Presser Foot



Piping Presser Foot



Gathering Presser Foot

JUKI®

JUKI CENTRAL EUROPE Sp. z o.o. ul. Poleczki 21, 02-822 Warsaw, Poland

Tel.: +48 22 545 04 00 / Fax: +48 22 545 04 11

www.jukieurope.com / www.facebook.com/JukiSewlt / e-mail: juki@juki.pl